

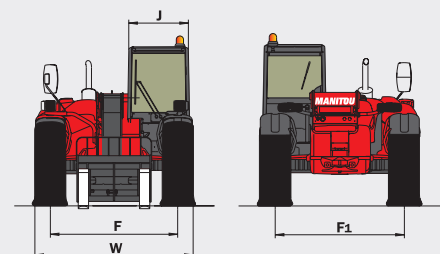
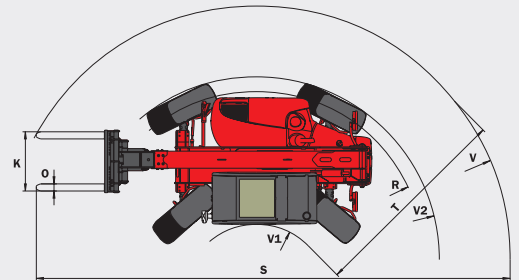
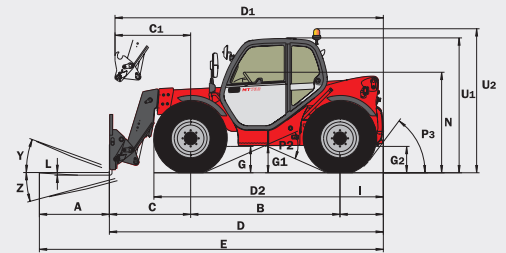
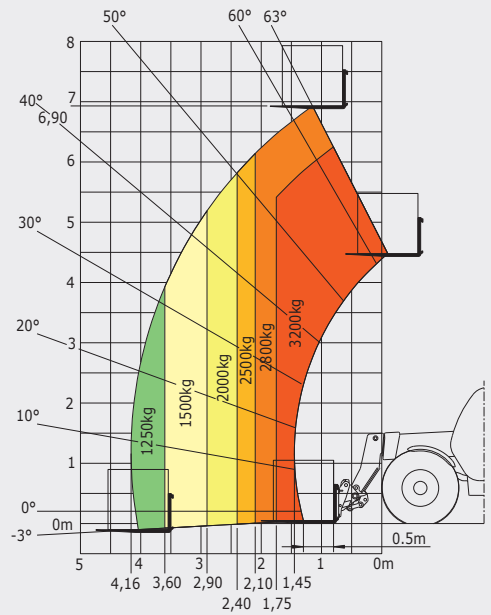
MT 732

		MT 732
	Lifting capacity at 500 mm from forks heels	3200 kg
	Break-out force (ISO 8313)	7400 daN
	Lifting height	6.90 m
	Time: laden/unladen (in sec)	
	Lifting	7.20/7.20
	Lowering	5.50/5.80
	Extension	6.50/6.50
	Retraction	5.40/5.90
	Crowd	2.90
Dump	2.80	
	Tyres	400/80-24 156A8 IND TL PCL
	Forks (mm)	
	Length x width x thickness	1200 x 125 x 45
	Braking	multiple-disk hydraulic brakes with oil bath on front and rear axles
	PERKINS STAGE III A Engine	1104D-44T
	Cubic capacity	4 cyl. - 4400 cm ³
	Power at 2200 rpm (ISO/TR 14396)	95 HP/70 kW
	Max. torque at 1400 rpm (ISO/TR 14396)	392 Nm
	Injection	direct
	Cooling	water
	Transmission	torque converter
	Gearbox	electro-hydraulic
	Number of gears (forward/reverse)	4/4
	Max. travel speed	25 kph*
	Hydraulics	
	Gear pump	105 l/min - 250 bar
	Capacities	
	Cooling system	18.50 l
	Engine oil	11 l
	Hydraulic oil	128 l
	Fuel	120 l
	Unladen weight (with forks)	7330 kg
	Width overall	2.26 m
	Height overall	2.30 m
	Length overall	4.77 m
	Turning radius (outer wheels)	3.67 m
	Ground clearance	0.45 m
	Drawbar pull	9280 daN
	Noise at driving position (LpA)	78 dB
	Environmental noise (LwA)	105 dB
	Vibration to whole hand/arm	<2.50 m/s ²
	Vibration on driver's body	1.015 m/s ²

mm		D2	I	P3	V1
A	1200	E 3894	J 763	R 53°	1250
B	2560	F 5966.6	K 865	S 3460	3667
C	1443.6	G 1846	L 1040	T 7590.6	2260
C1	1537	F1 1846	M 45	U 3555	Y 11.9°
D	4766.6	G1 455	N 1690	U1 2300	Z 113.8°
D1	4860	G2 440	O 125	U2 2550	
		G2 440	P2 47.5°	V 4805	

Maximum height reach: 1.15 m

As per standard EN 1459 annex B



This brochure describes versions and configuration options for Manitou products which may be fitted with different equipment. The equipment described in this brochure may be standard, optional or not available depending on version. Manitou reserves the right to change the specifications shown and described at any time and without prior warning. The manufacturer is not liable for the specifications given. For more information, contact your Manitou dealer. Non-contractual document. Product descriptions may differ from actual products. List of specifications non-exhaustive. The logos and visual identity of the company are the property of Manitou and may not be used without authorisation. All rights reserved. The photos and diagrams contained in this brochure are provided for information only.

MANITOU BF SA - Limited company with board of directors - Share capital: 39,547,824 Euros - 857 802 508 RCS Nantes